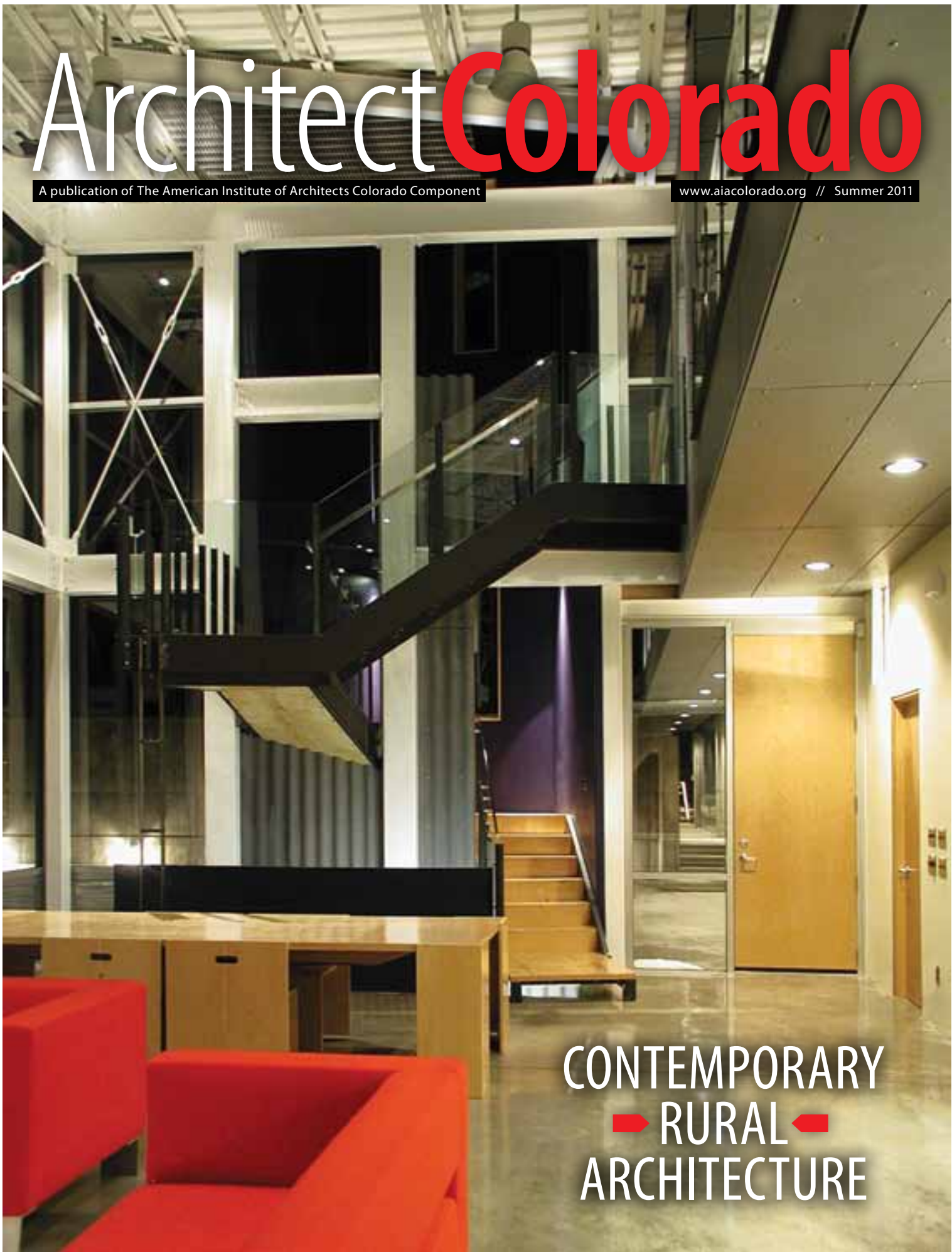


# Architect Colorado

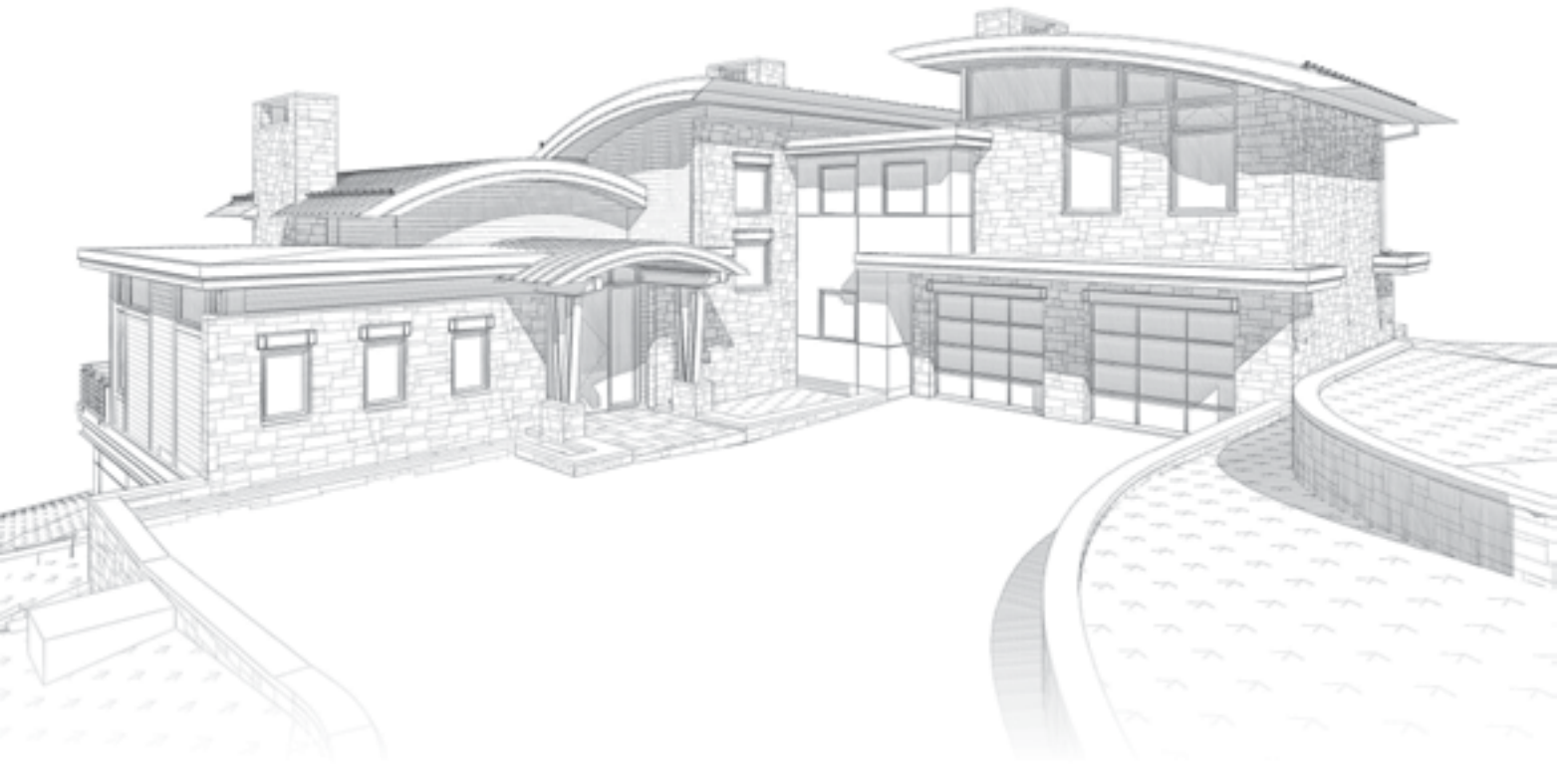
A publication of The American Institute of Architects Colorado Component

[www.aiacolorado.org](http://www.aiacolorado.org) // Summer 2011



CONTEMPORARY  
➔ RURAL ◀  
ARCHITECTURE

# Contents



## Features

Second Nature .....	<b>8</b>
Community at the Heart.....	<b>13</b>
Open to Inspiration .....	<b>18</b>
Responsible Responsibility .....	<b>23</b>

## Departments

Member News .....	<b>7</b>
On the Boards .....	<b>24</b>
Looking Ahead.....	<b>26</b>

### On the Cover:

The Crowder House staircase. A sculptural staircase partially enclosed by a corrugated cement board tower links each floor level within the house. Its wood and steel treads weave between darkness and light, creating moments to orient oneself within the larger landscape.

### Above:

The Simon Residence, designed by David Johnston Architects, will be completed in October 2012.

## Simon Residence

David Johnston Architects

**Location:** Snowmass Village, Colo.

**Owner:** Karen Simon

**Scope:** New single-family residence

**Cost:** \$3.5 million

**Project Completion:** October 2012 (projected)

The client met with approximately eight Aspen-area architecture firms, including David Johnston Architects (DJA), in late 2009 with the goal of having a signed contract before she returned to London less than a week later. After the initial meeting, firms selected for consideration, including DJA, had a little more than 24 hours in order to present her with plans, elevations and anything else the firm could complete in that time. From there, the client would only consider the architects of her two favorite designs.

In addition to plans and elevations, DJA presented the client with a number of 3-D renderings. DJA project manager John Hufker attributes the accurate 3-D representations of the firm's design as a major influence in her final decision to grant DJA the contract.

Situated on the slopes of Snowmass Mountain, the Simon residence takes its unique massing in an effort to invite in the incredible views, which encompass everything from Independence Pass to the nearby aspen forests. The design of the stacked forms was a response to the strict height limits following topography largely influenced by the previous house on the site.

One of the client's goals was to create multiple entertaining areas within the home that blend the indoor and the outdoor seamlessly within the space. This was accomplished with a landscape design that affords guests the opportunity to interact with each from a variety of spaces, including from the hot tub, around the fire pit or helping out with dinner on the main-level deck.



## FOLD

office 527

Michael Piché, AIA

**Location:** Denver

**Scope:** Full architectural services for new construction

**Project Start:** Winter 2011

Like many urban neighborhoods, the juxtaposition of residential and urban development creates intense debate on how to address their programmatic requirements properly while working within the context and environment of the neighborhood as a whole. Modernization, contemporary aesthetics and ever-changing living patterns of the inhabitants can be integrated into the neighborhood successfully and open opportunities for architectural exploration.

Sitting on the edge of a Denver neighborhood's vibrant commercial strip, FOLD seeks to engage the dichotomies of both residential and commercial. Instead of being forced to be defined by purely a commercial or residential typology, this structure addresses both to create an urban retreat close to the action for the residents.

A simply detailed, folded concrete plane creates a variety of private volumes by weaving around the residential program. The concrete cantilever created on the second-story projects out to align with the edge of the sidewalk and the front face of neighboring commercial structures. The projection engages the urban streetscape, defining the hard edge of a commercial strip. The solid concrete fence at grade further serves this purpose. Meanwhile, the rest of the residence is nestled back away from the bustling streetscape, creating a buffer from the activity with a secluded garden. On the opposite side, the residence is open toward its residential neighbors with glass façades and its inviting landscaped roof deck. The folded concrete projects in a horizontal plane to create shade and wraps volumes only at the ground level, reducing its mass and scale to a neighborly size.

